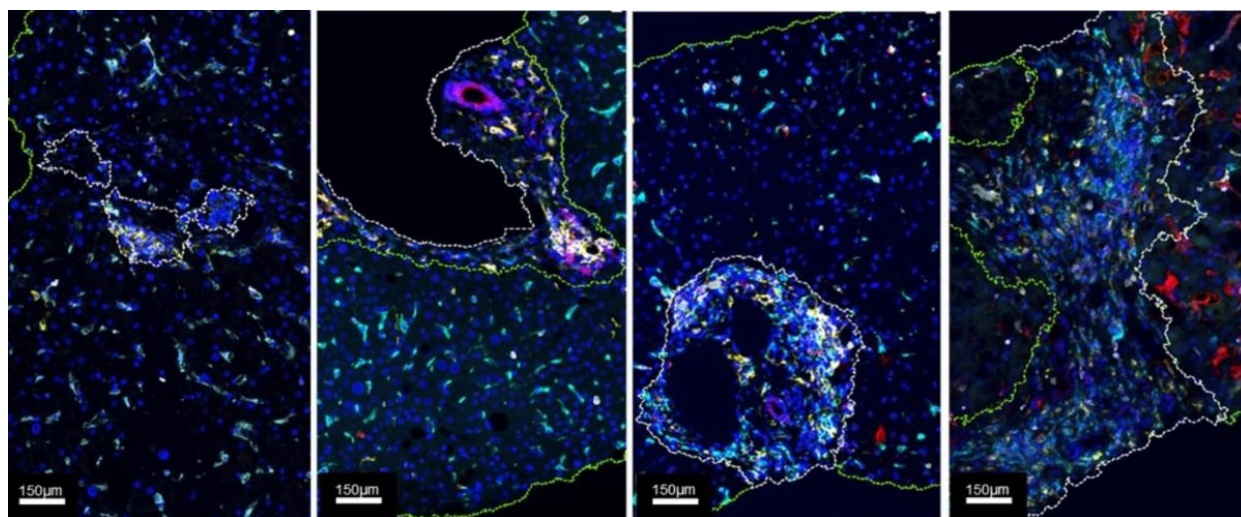


LIVER CENTER SEMINAR

Mapping the Inflammatory Landscape of Steatotic Liver Disease: From Risk Factors to Spatial Analysis



Wednesday, February 21, 2024

9:00 - 10:00 AM

HSW-301

Heather Stevenson-Lerner, MD, PhD, FCAP

Professor, Department of Pathology

University of Texas Medical Branch

Dr. Heather Stevenson-Lerner is a Professor in the Department of Pathology, Division of Surgical Pathology at the University of Texas Medical Branch. Her research focuses on the role of the hepatic immune response in the development of liver injury and fibrosis. Her laboratory is interested in several liver diseases, including chronic hepatitis C and other infectious diseases, steatotic liver disease and autoimmune hepatitis.

Host: Holger Willenbring, MD, PhD

Please contact Sandhya.AdiyodiVeetil@ucsf.edu if you are interested in meeting with Dr. Stevenson-Lerner.